

# PPI in Preclinical Research- experiences from the CRUK RadNet Glasgow PPI Group



Dr Aileen Duffton, Lead Research Radiographer, Beatson West of Scotland Cancer Centre

Linda Galbraith, PPI Lead, RadNet Glasgow

Anna Morris, Programme Manager, RadNet Glasgow



CANCER  
RESEARCH  
UK

RadNet  
Glasgow

# CRUK RadNet Radiation Centre of Excellence Glasgow

- *“CRUK RadNet is a network of centres of excellence and state-of-the-art facilities working with the research community to tackle the major challenges in radiobiology and radiation oncology”.*
- RadNet Glasgow Centre of Excellence was established in November 2019.
- Part of a national network effort, funded by CRUK, with the aim of improving radiotherapy as a treatment for cancer.
- *“to establish a critical mass of activity, expertise and infrastructure in multiple locations”.*



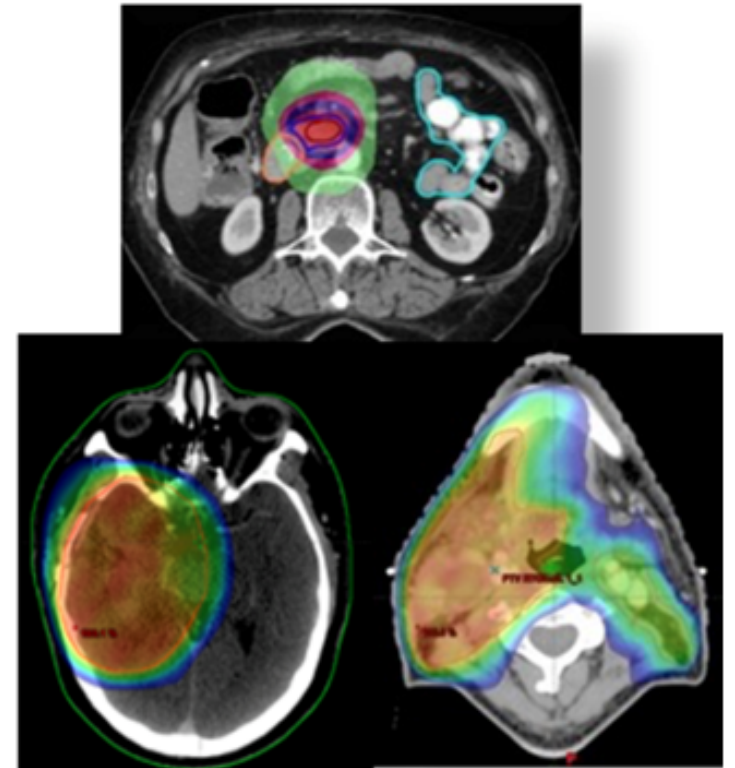
# RadNet Glasgow Research Focus

We focus on cancers where radiotherapy treatment still has low success rates: **glioblastoma, head and neck cancer, lung cancer, mesothelioma, liver cancer, pancreatic cancer and rectal cancer.**



We are also investigating how **health inequalities in Scotland** could be **linked to poor radiotherapy treatment results.**

We carry out both preclinical research (meaning basic science or lab-based research) and clinical research (studies involving human participants).



CANCER  
RESEARCH  
UK

RadNet  
Glasgow

# RadNet Glasgow PPI Group

Group of 'radiotherapy experienced' patients, family members and carers from our local community who kindly give their time to contribute to the research programme and provide guidance on the relevance of proposed work to patients and the public.

Our PPI Group reviews **both preclinical** (scientific) and **clinical** proposals and ongoing projects (developing a radiation focus) that fall within the RadNet remit.

## Members are also supported to:

- become Co-Investigators on grant applications
- join other research initiatives (cancer and non-cancer)
- be PPI representatives on national and international boards and advisory committees.



CANCER  
RESEARCH  
UK

RadNet  
Glasgow

# Integration of PPI in the Research Programme

PPIE lead **Linda Galbraith** also plays a key role on the Steering Committee (internal board to oversee the research programme) and the Pump Priming Project Funding review panel, ensuring the patient voice is embedded across all RadNet Glasgow activities.

Linda has used the experience acquired in her RadNet role to secure numerous national and international PPI positions. These include UK Chair of the patient group of ACED, a US/UK initiative to improve early diagnosis in cancer involving leading universities and patient panel member for the UK Innovative Licensing & Access Programme. She was invited to chair a panel at the CRUK Data-Driven Research conference in February 2024 and will present at the CRUK Scotland Centre Data and Informatics workshop next month.

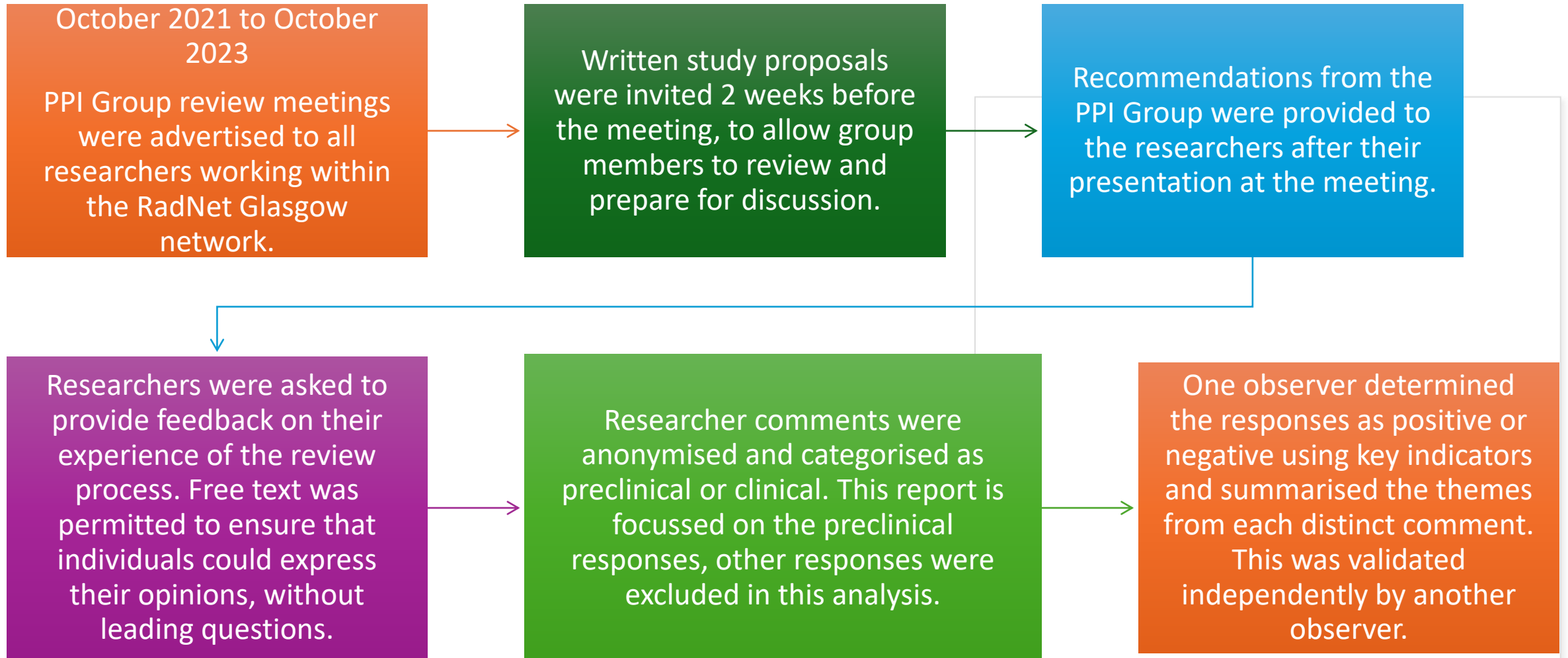
PPI  
Representative  
Linda Galbraith



CANCER  
RESEARCH  
UK

RadNet  
Glasgow

# Experiences of PPI in Preclinical Radiation Research



CANCER  
RESEARCH  
UK

RadNet  
Glasgow

# Facts and Figures

The group reviewed 16 projects over 24 months, **44% of which were preclinical.**

Seven of the researchers who responded had presented preclinical projects and were included in the analysis. This included:

- 6 early career researchers, defined as not yet having an independent research group
- 1 research fellowship holder, who is moving towards independence.

Of the 7 presenters, 2 were clinical researchers and 5 were research scientists.

Individual, anonymised comments are shown in Figure 1 and **all feedback received was positive.**

The text included 11 distinct statements; a summary of themes are presented in Figure 2.

# Figure 1: Preclinical Researcher Feedback

Positive indicators received:



CANCER  
RESEARCH  
UK

RadNet  
Glasgow



## Figure 2: summary of themes

Theme	Description
PPI Engagement and timing:	Emphasising the value of presenting the project early to the CRUK RadNet PPI group.
Support and Feedback:	Acknowledging the committee's support and feedback.
Translational Element and Patient Outcomes:	Recognising the importance of discussing with PPI to incorporate a translational element, focusing on improving patient outcomes.
Impact on Research Practice:	Acknowledging the positive change in research practices resulting from collaboration with the PPI group.
Fellowship/ Grant Application Success:	Expressing gratitude for the successful fellowship/ grant application and the critical role of support/ input from PPI group.
Ongoing Collaboration:	Anticipating continued discussions and collaborations as the project progresses.
Positive Experience for Early Career Researcher:	Describing the RadNet PPI meeting as an extremely useful and positive experience, especially for an early career researcher.



# Summary



The researcher responses capture the positive impact of PPI engagement in preclinical research and contributes to the overall narrative of its benefit.



This work highlights specific themes which are important to preclinical research such as timing of review, benefits, support, feedback implementation and the primary goal of improving patient outcomes.



We will continue to encourage preclinical researchers to present their projects to the PPI Group to ensure our research is relevant to patients.



CANCER  
RESEARCH  
UK

RadNet  
Glasgow



# Acknowledgements

- RadNet Glasgow PPI Group members
- Researchers who provided their feedback
- CRUK RadNet funding (C16583/A28803)